



MONTHLY MEMBERSHIP PROGRESS REPORT

District 105BS

Results as of: 05/31/2018

GMT: JOOST PAIJMANS

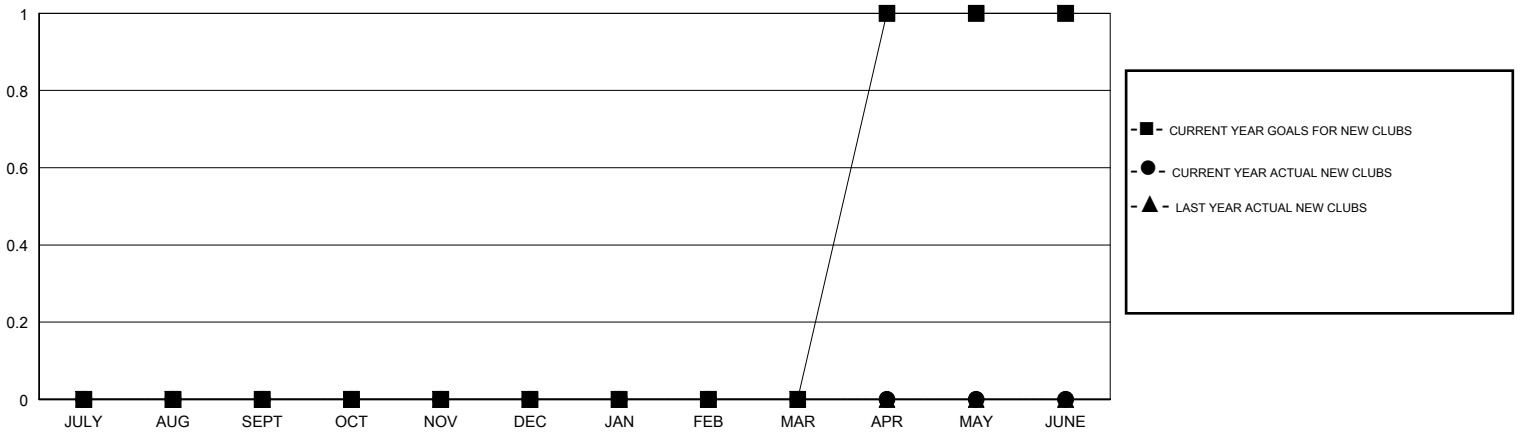
LOCATION ENGLAND

GMT CA

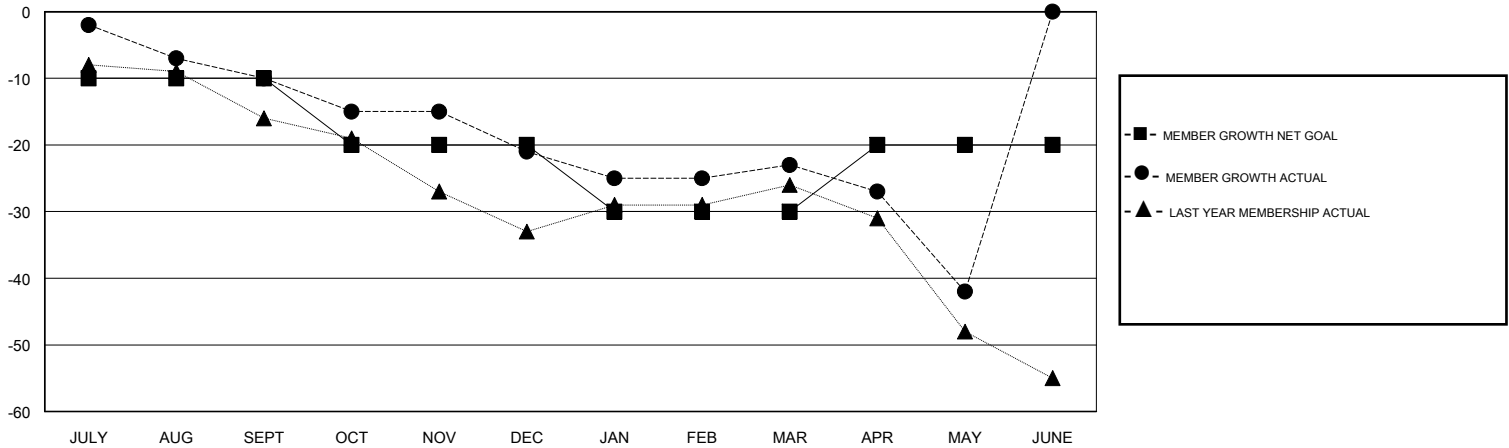
Clubs			
RESULTS FOR 2017-2018			
QUARTER	NEW CLUB GOAL	NEW CLUBS	DROPPED CLUBS
JULY/AUG/SEPT	0	0	0
OCT/NOV/DEC	0	0	0
JAN/FEB/MAR	0	0	0
APR/MAY/JUNE	1	0	0

Members			
RESULTS FOR 2017-2018			
QUARTER	MEMBER GROWTH NET GOAL	MEMBER GROWTH ACTUAL	DROPPED MEMBERS ACTUAL (including transfers)
JULY/AUG/SEPT	-10	14	22
OCT/NOV/DEC	-10	10	20
JAN/FEB/MAR	-10	10	12
APR/MAY/JUNE	10	9	28

GOALS AND ACTUAL NEW CLUBS CUMULATIVE



GOALS AND ACTUAL MEMBERS CUMULATIVE



DROPPED CLUBS: 0	24 CLUBS OF 52 ADDED 1 OR MORE NEW MEMBERS	<u>GENDER DISTRIBUTION</u> MALE 534 (70.08%) FEMALE 228 (29.92%) Women Percentage Fiscal Year Goal: 40%
<u>DROPPED MEMBERS</u> DECEASED 15 CLUB CANCELLED 0 OTHER 67 TOTAL 82	CLICK HERE FOR CUMULATIVE MEMBERSHIP DATA	TOTAL FAMILY UNIT MEMBERS 137 FAMILY MEMBERS PAYING HALF DUES 69